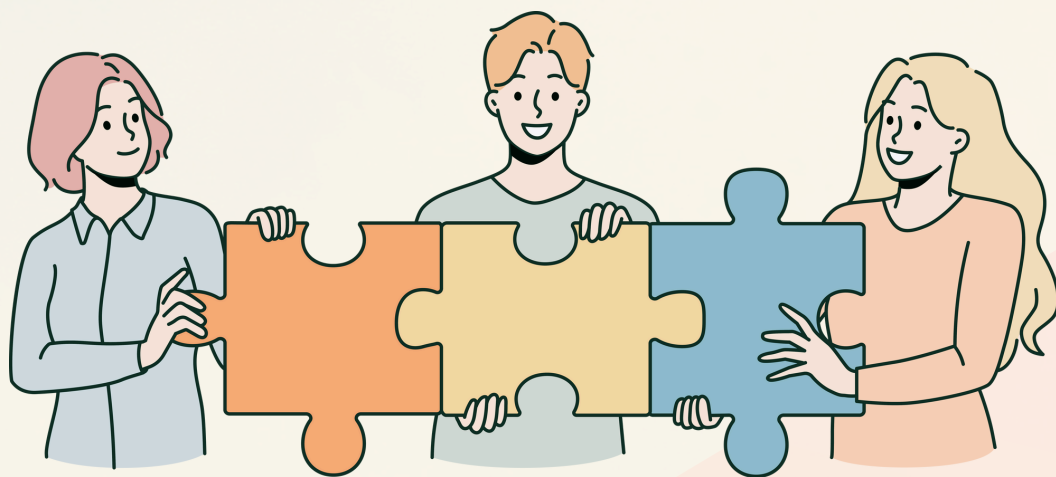


**2024 OCTOBER** (10/14—10/30)

# CROSS-UNIVERSITY OPEN EMI COURSE OBSERVATION

The NTNU Resource Center for EMI cross-institutional resource integration project encompasses 10 universities, featuring 14 open classroom observation sessions.

This integration not only strengthens collaboration with universities in central and eastern Taiwan but also maximizes the application of resources.



Scan QR code  
for More Information

## CO-ORGANIZED BY



The schedule for each session is subject to change,  
Please refer to the updated announcement from each institution and stay tuned for the pre-departure notice.